

Spark GO

User Manual

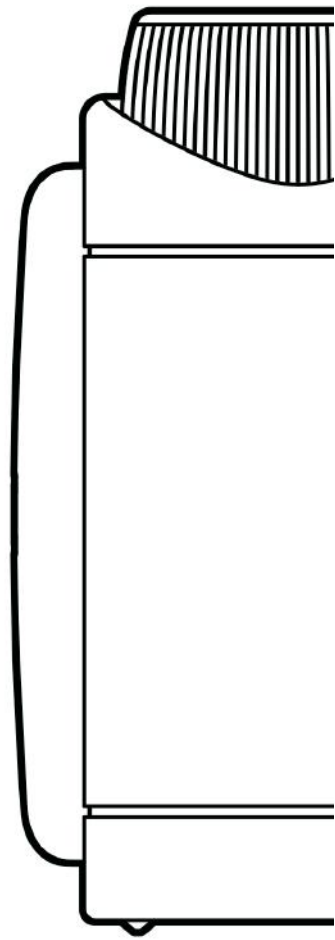


Table of Contents

02	Product Spec
03	Hardware Control (Top)
04	Hardware Control (Side)
05	Using Spark GO as a Guitar Amp
05	Using Spark GO as a Wireless Bluetooth® Speaker
06	USB Audio
06	Headphone/Line Out Port
07	Tuner Mode
08	Music Input Priority
08	LED Indicator Status
09	Factory Reset
09	Force Shutdown & Restart
11	App Connection
12	Log In to Your Positive Grid Account
13	Manage Your Profile
14	Adjusting Effects and Presets
15	Exploring the ToneCloud®
16	Share Your Own Presets to the ToneCloud
17	Explore Other's Profiles
18	Using Smart Jam
23	Starting a Quick Jam
24	Using Auto Chords and Tones
25	Connecting Spotify and Apple Music
26	Using Video Recording
27	Using Voice Command
28	Device Card and Adjustments (EQ Scenario, Headphone/Line Out, Power Settings and more)
29	Other Available Functions
30	Online Support

Product Specification

AUDIO SPECIFICATIONS

FREQUENCY RANGE

110-20000 Hz

STEREO/MONO

MONO

MAXIMUM SOUND PRESSURE LEVEL

82 dB SPL @1m

CABINET PRINCIPLE

Passive Radiator

POWER AMPLIFIERS

5 Watt Class D Amplifier

SPEAKERS

One - 2" Custom Designed Speakers

TOTAL IMPEDANCE

8 ohms

BATTERY

CHARGING TIME

2 hours @ 2A/5V USB-C Charger

PLAY TIME

Up To 8 Hours (on mid volume or lower)

INCLUDED IN THE BOX

BOX CONTENTS

Spark GO Amplifier
Removable Protective Sleeve
Reversible Duo-Tone Strap
USB-C Cable
Woven Grille
Hardshell Grille
Quick Start Guide

SOFTWARE

MOBILE APPS

Spark App for iOS and Android

CONTROLS AND CONNECTIVITY

TOP PANEL CONTROLS

Preset Selector
Music Volume
Guitar Volume

ONBOARD EFFECTS

33 Amp Models
43 Effects
(Noise Gate, Compressor, Distortion, Modulation/EQ, Delay, Reverb)

WIRED CONNECTIVITY

1/4" Guitar Input
1/8" Headphone Out/Line Out

WIRELESS CONNECTIVITY

Bluetooth Audio

USB AUDIO

USB Interface for Recording
1 In x 2 Out
16 Bit, 44.1 kHz Sample Rate

PHYSICAL UNIT

DIMENSIONS

125 x 85 x 45 mm
(4.92 x 3.34 x 1.77 in)

WEIGHT

346 g
0.76 lb

COVERING

Silicone

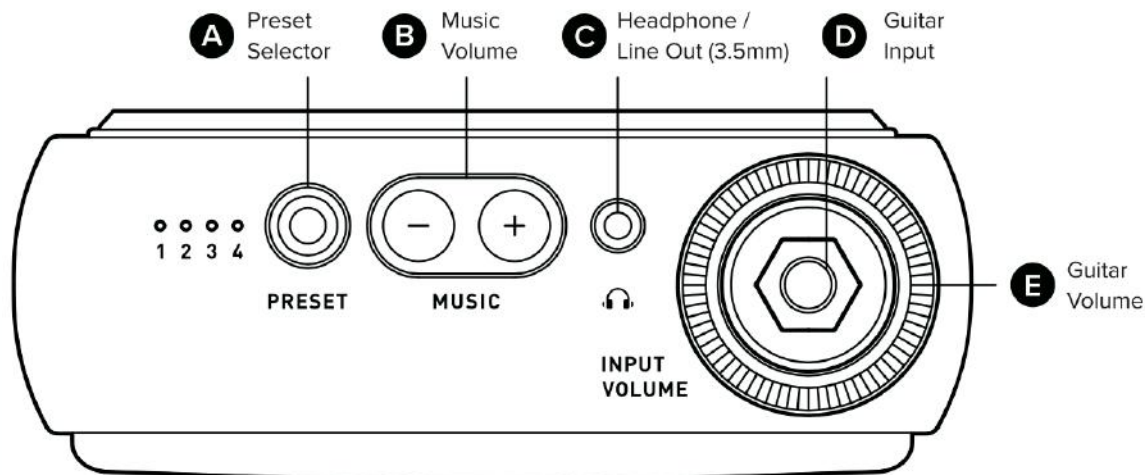
GRILLE CLOTH

Woven/Custom Black Hardshell

HANDLE

Reversible Duo-Tone Strap

Top Control Panel



(A) Preset Selector

Press the preset button to select one of four presets on Spark GO. These presets can also be customized in the Spark app. The red LED indicates the preset currently in use. Hold the Preset button to enter Tuner Mode.

(B) Music Volume

Adjusts the sound volume of Bluetooth® devices and USB audio playback.

(C) Headphone/Line Out (3.5mm)

Plug in a pair of headphones (8 ohm - 64 ohm) with a 3.5mm jack. Note that sound will not come out of Spark GO's main speaker when headphones are plugged in.

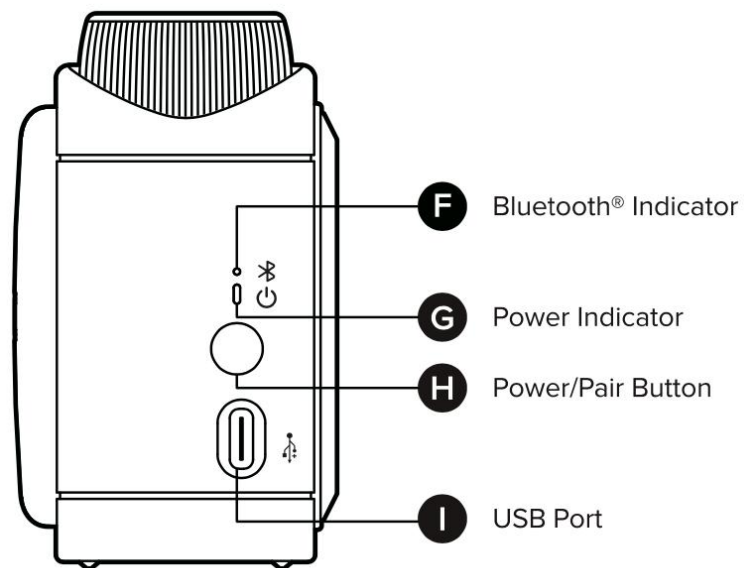
(D) Guitar Input

Plug in your guitar with a standard 1/4" (6.3mm) guitar cable.

(E) Guitar Volume

Adjusts the overall volume of your guitar.

Side Panel



(F) Bluetooth® Indicator

Indicates the status of your Bluetooth audio connection:

- Solid Blue: Connected
- Flashing Blue: Pairing

(G) Power Indicator

Indicates power and battery status.

- Solid Green: Powered on or fully charged
- Solid Red: Low battery
- Flashing Red/Green: Charging

(H) Power/Pair Button

- Hold to turn Spark GO on or off.
- Press to enter Bluetooth® pairing mode when connecting to a new device.

(I) USB Port

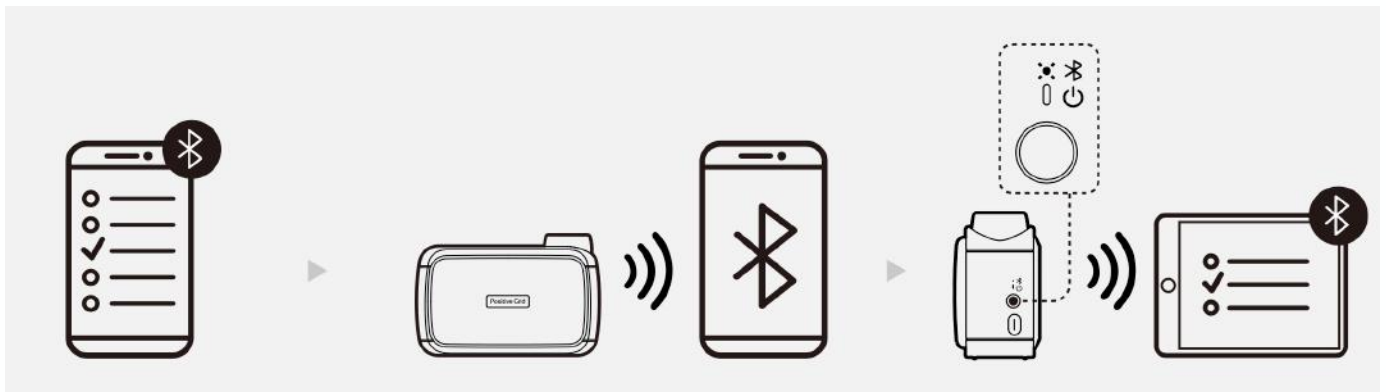
Connect the included USB-C® to USB-A cable to charge Spark GO, or to connect it to a PC/Mac for use as an audio interface.

Using Spark GO as a Guitar Amp



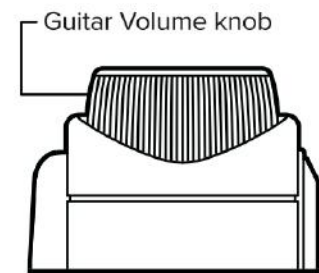
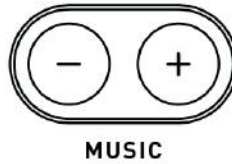
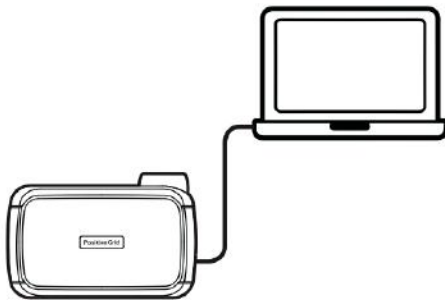
- Plug your guitar into the Guitar Input jack on the top control panel.
- Select one of the four presets available and adjust the volume by using the Guitar Volume knob on the top control panel.
- To access more tones and create your own, download the Spark app using the QR code on page 11 or search for “Spark amp” in the App Store or Google Play.

Using Spark GO as a Wireless Bluetooth® Speaker



- When connecting to Spark GO for the first time, turn Bluetooth® on in your mobile device settings, and select “Spark GO Audio” from the list of scanned devices.
- Spark GO will automatically pair with the last device it connected to. If the last device is not available, Spark GO will automatically connect to a device that has been previously paired.
- To pair a new device, press the Power/Pair button on the side panel, turn Bluetooth® on in your mobile device settings, and select “Spark GO Audio” from the list of scanned devices.

USB Audio



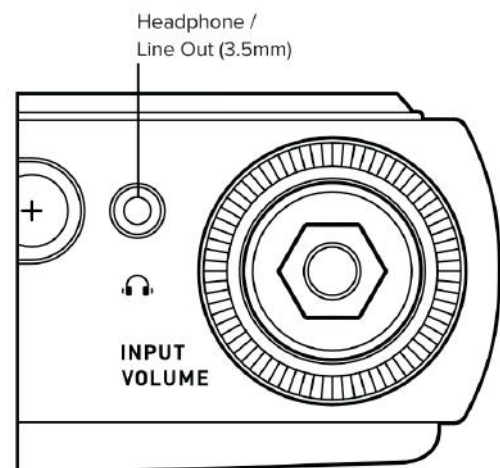
- With Spark GO turned off, connect to a computer via USB with the included USB cable. Turn on Spark GO and select "Spark GO USB Audio" as the recording/playback device.

- Adjust USB playback volume in the media player settings on your computer.

- Adjust direct guitar monitoring with the Guitar Volume knob.

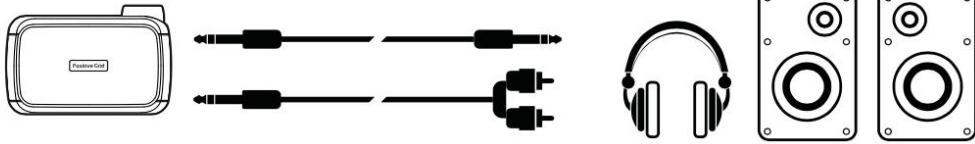
Headphone/Line Out Port

- The 3.5mm headphone/line out port on the top control panel can be assigned as a stereo output for connecting headphones or speakers with a stereo input. It can also be used as a mono output for connecting guitar amps, powered guitar cabinets, mixers, or audio interfaces.
- Output mode options can be found in the Spark app settings, see page 28.
- Note that a 3.5mm to 1/4" or RCA adapter (not included) may be required to connect certain devices.



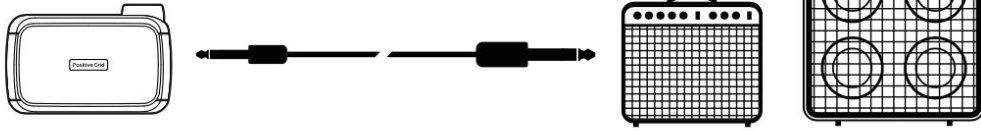
Stereo Mode

For headphones or speakers with a stereo input. (This mode is on by default)

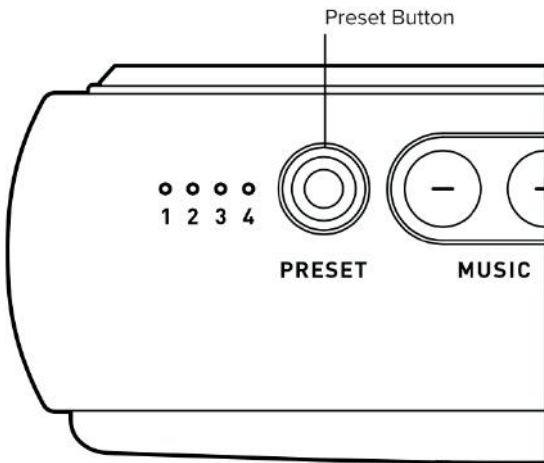


Mono Mode

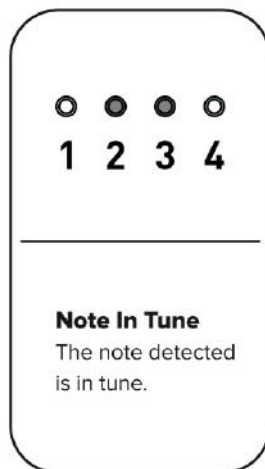
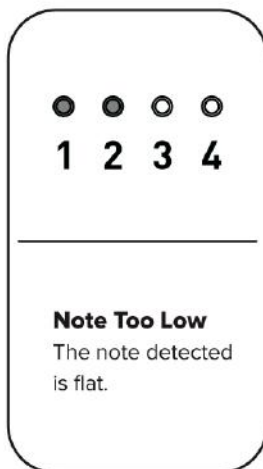
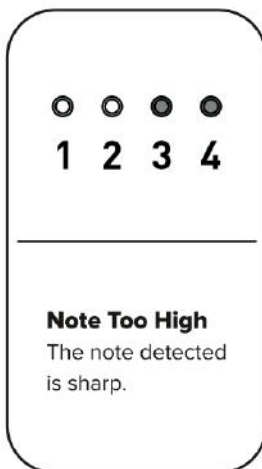
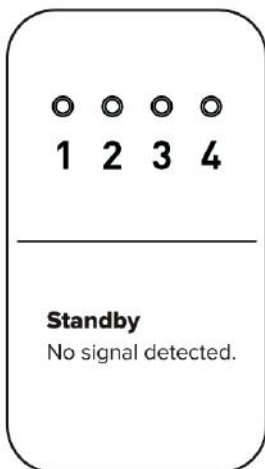
For guitar amps, powered guitar cabinets, mixers, or audio interfaces with a mono input.



Tuner Mode



- Hold the Preset button to enter tuner mode.
- While in tuner mode, the 4 Preset LED's will display if the string being played is in tune.
- Note that your guitar signal will be muted while tuner mode is on.
- To exit tuner mode, press the Preset button again.



Music Input Priority (Bluetooth Audio / USB Audio)

- Spark GO accepts 2 different input ways (Bluetooth Audio / USB Audio) to stream the music, but please note that you can only use 1 input at a time. If the 2 of them are connected to Spark GO at the same time, only one of the input will work properly.
- Bluetooth Audio In will be prior to all the inputs. The 2nd priority is USB Audio. If your music input is not working properly, please make sure there is no higher priority input occupying.

LED Indicator Status

Status	Power Indicator	Bluetooth Indicator
Battery charging	Blinking Red/Green	
Powered on or fully charged	Solid Green	
Low battery	Solid Red	
Empty battery	Red blinking 3 times	
Bluetooth Pairing Mode		Blinking Blue
Bluetooth device connected		Solid Blue
Factory reset mode	Blinking White	
Temperature warning	Fast blinking Red	Fast blinking Red

Factory Reset

Follow the steps below to perform a factory reset. This process will reset all the four presets stored on the Spark GO as well as its Bluetooth pairing information, Headphone/Line Out Mode, EQ Scenario, Power Saving Setting.

1. Turn off your Spark GO.
2. Hold the Power/Pair and Preset buttons, then release the buttons when the Power Indicator turns into white color.
3. Hold the Power/Pair or Preset button, until all four preset LEDs buttons blink once, then release the button.
4. Spark GO will be turned off automatically when the factory reset is completed, turn it back on to start playing.

*After the step 2, if you're not ready to perform factory reset, or tends to do it later, you can cancel the process by tapping the Power/Pair or Preset button.

Force Shutdown & Restart

If Spark GO runs into an issue where the knobs/buttons doesn't respond anymore or freezes, or emits a high pitched or unusual noise, follow the steps below to force shutdown and restart Spark GO.



1. Remove the USB cable on Spark GO.
2. Hold the Power/Pair button over 10 seconds.
3. Release the Power/Pair button, and hold it again to turn Spark GO on.

Spark App


User Guide



DOWNLOAD YOUR SPARK APP



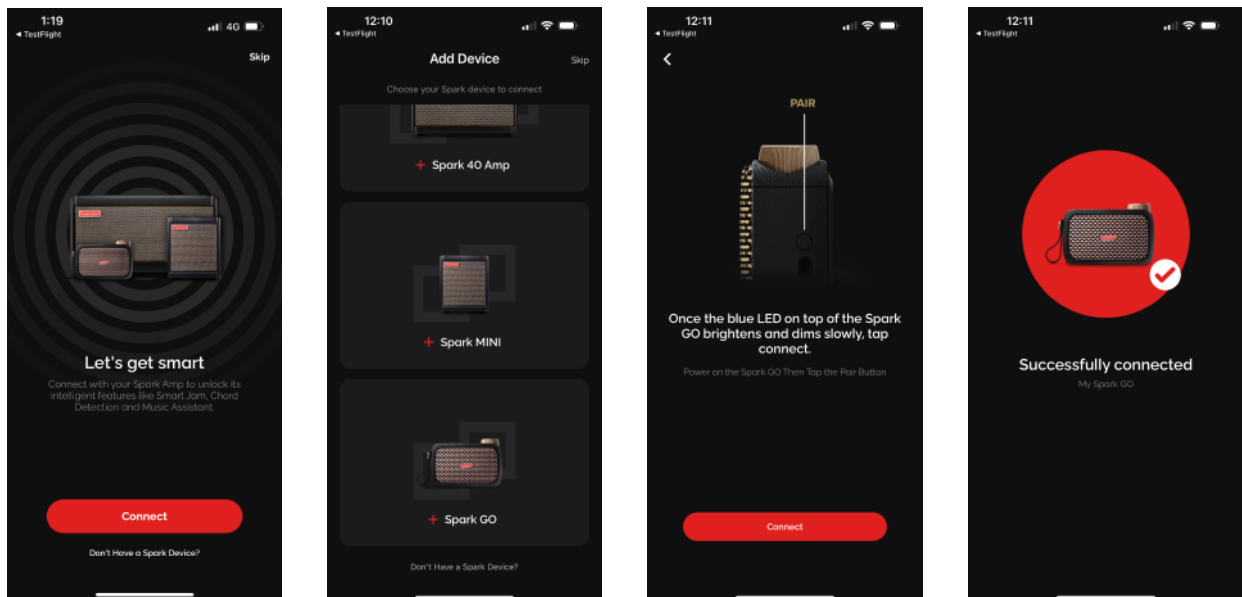
App Store
Supported iOS 12 or later



Google Play
Supported Android 8 or later

Download and install the Spark App compatible with your smartphone's operating system.

Connecting Spark Amp to Your Smartphone



- (A) Make sure to allow the Spark app access to Bluetooth (iOS) or Location Services (Android) to allow the Spark app to establish a Bluetooth connection with your Spark GO.
- (B) Turn on Bluetooth on your smartphone and Spark device.
- (C) Select the device you want to connect to.
- (D) Enter Pairing Mode by pressing the Power/Pair button on the Spark GO, then tap the connect button in the app.

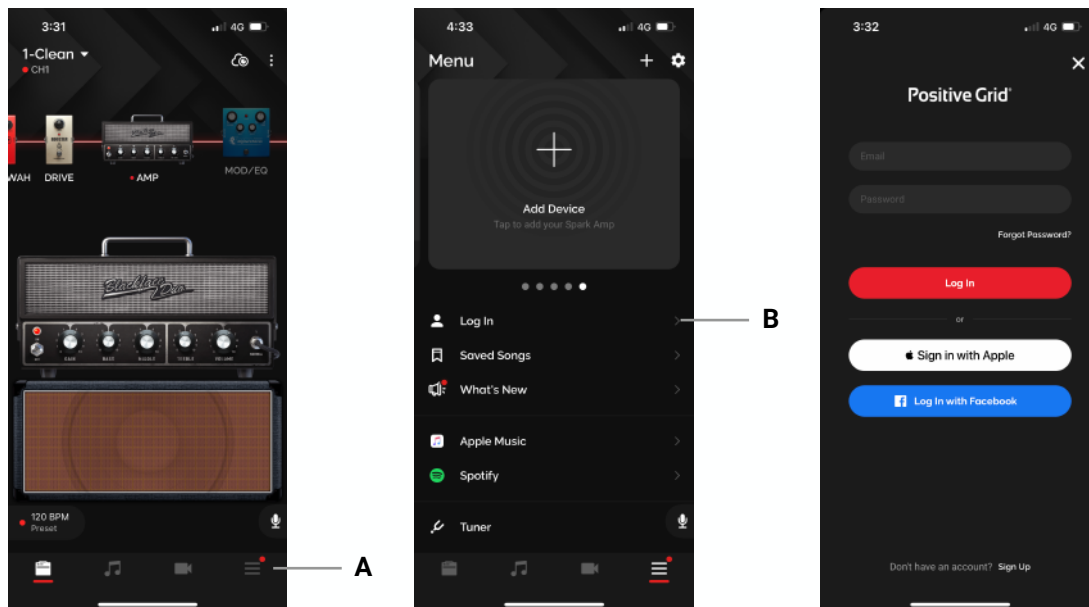
Tip: Connect Spark Amp to your smartphone as a Bluetooth speaker to play music. A stable connection between the amp and the app is required for audio output.

Tip: Selecting a device will only occur when you first install the Spark app. Subsequent connections will be done by pressing the connect button when you enter the Spark app.

Tip: If you are unable to connect to the amp, ensure that other nearby Bluetooth devices are turned off and try again.

Log In to Your Positive Grid Account

Log in to your Positive Grid account to download tones from the ToneCloud and more.



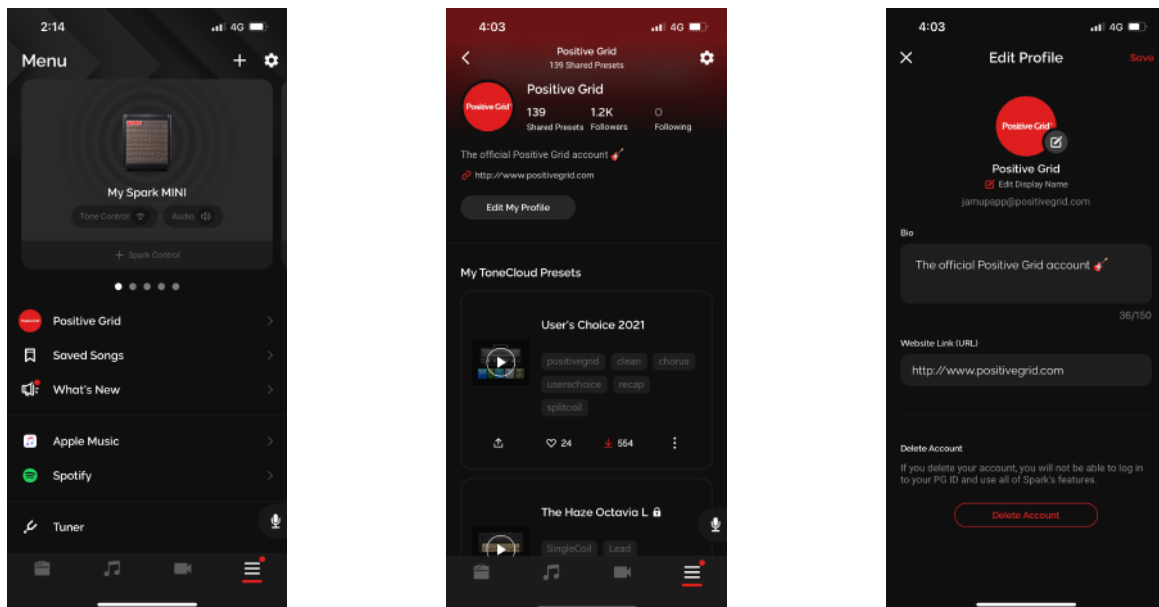
(A) Tap the Menu icon



(B) Tap Log In

(C) Log in with your existing account, use your Apple ID or Facebook ID, or tap on Sign Up to create a new account

Manage Your Profile

Set up your profile to manage your ToneCloud presets and connect with other Spark users.

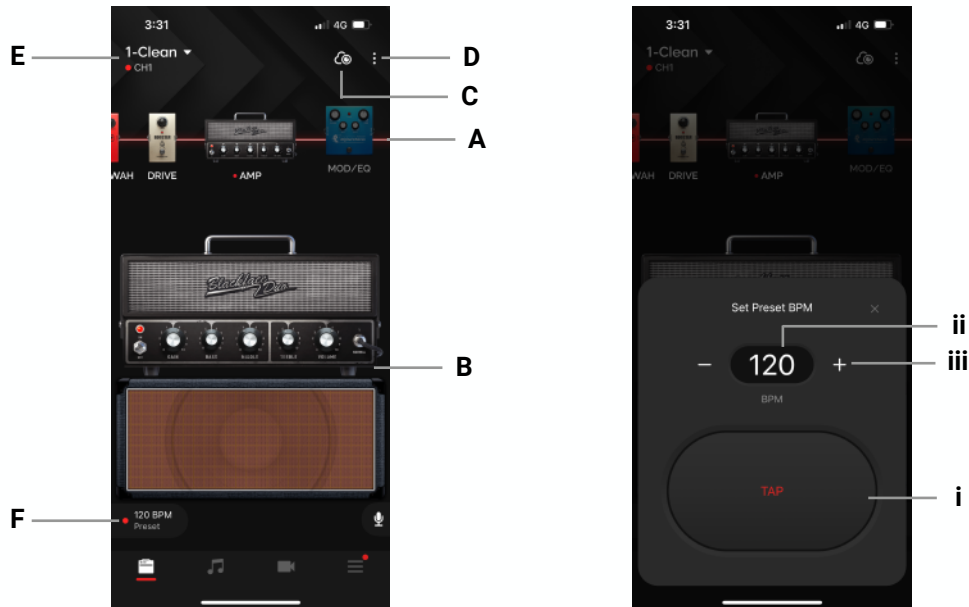


- (A) Once you log in, a Set Up Your Profile prompt should appear, which will take you to the Edit Profile Page. You may edit your profile after the fact by going into your profile via the Menu page and tapping on your profile, then tapping on Edit My Profile.
- (B) You may edit your Display Name, which is the name that will be shown to others in the ToneCloud, edit your Bio and your URL, and delete your account.
- (C) You may edit your ToneCloud preset details by tapping on the  icon to rename or delete the preset from the ToneCloud.
- (D) You may also log out by tapping the  icon

Note: Deleting your account is permanent and you will not be able to log in with your previously deleted account credentials.

Adjusting Effects and Presets

After connecting your Spark amp to the Spark app, you may tweak settings to your liking or browse our factory presets.



(A) Signal Chain:

1. Swipe left or right to scroll along the signal chain (For mobile)
2. Swipe up and down to switch effects on and off.
3. Double-tap the amp or effects icon to select an effect.

(B) Effects Section:

1. Effects on/off: tap the LED on the amp/effect pedal to switch the effect on and off.
2. Tone control: turn the knobs to adjust the parameters

(C) ToneCloud: tap the top right icon to open ToneCloud.

(D) Option Menu:

1. Overwrite - overwrite the current preset.
2. Save as New - save as a new preset.
3. Share to ToneCloud - share your current preset to ToneCloud.
4. Save to Hardware - save your current preset to a Spark GO Amp preset slot.

(E) Local Presets - tap the preset name to select presets you've saved to your smartphone
The red dot along with CH1/2/3/4 or RHYTHM/LEAD/SOLO/CUSTOM underneath the Preset name indicates that a preset saved on the Spark amp itself is currently being used.

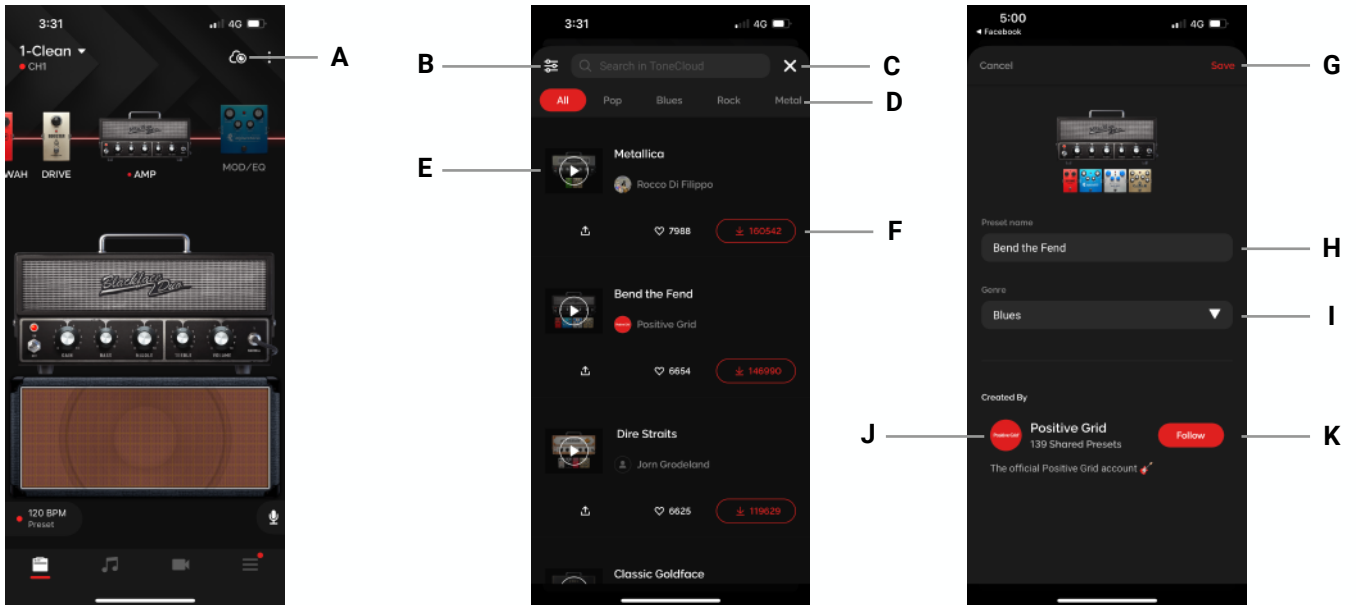
(F) Tap Tempo - sync up delays and modulations when the BPM sync toggle on the effect is on by assigning a BPM to your preset. You may adjust BPM in 3 ways:

- (i) Tap the TAP button to tap a tempo
- (ii) Tap the BPM value and type in your desired BPM
- (iii) Tap the + or - buttons to adjust by 1 BPM, long press the buttons to jump up by increments of 10 BPM

Exploring the ToneCloud®

The ToneCloud® is a preset sharing system developed by Positive Grid. Sync your presets across devices, take your tones on the road, share your presets or download presets designed by other musicians in our community from all over the world!

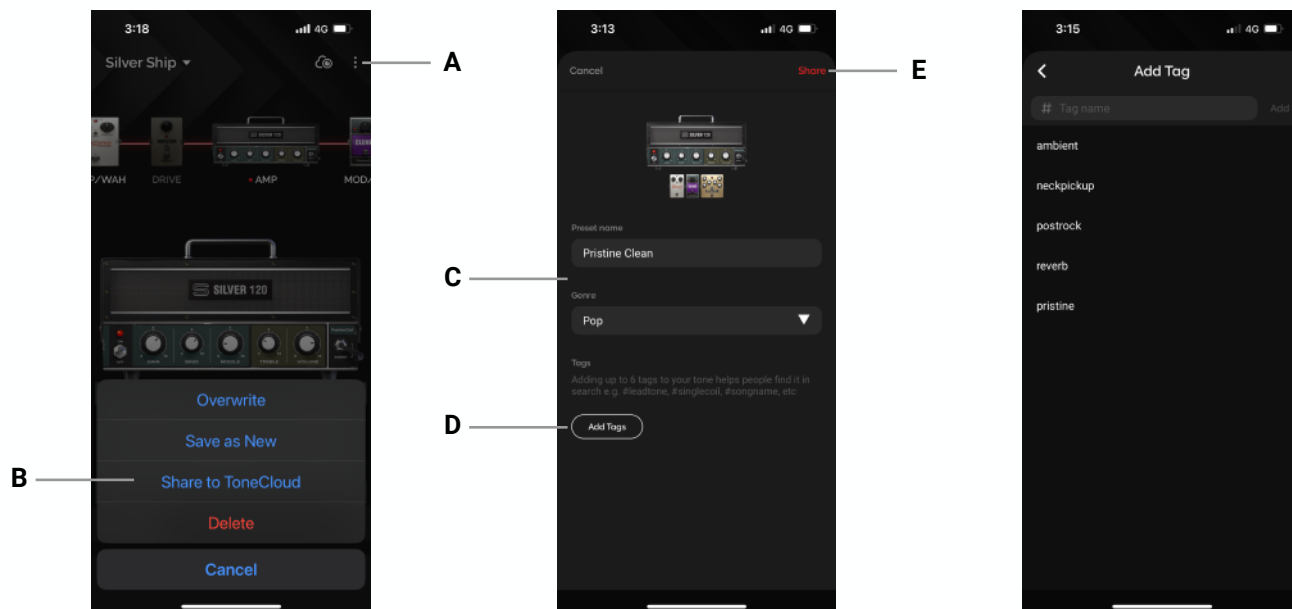
Search and Preset Actions




- (A) Tap on the ToneCloud icon to access the ToneCloud
- (B) Tap to Sort presets
- (C) Tap the X to exit the ToneCloud
- (D) Tap on the categories to browse presets by genre
- (E) Tap the Play button on the Preset thumbnail to preview a tone when connected to the Spark amp
- (F) From Left to Right; (i) [ToneLink] Tap on the Share button to share a link to the preset externally, (ii) Tap on the Like button to add the preset to your favorites, (iii) Tap the Download button to bring up the Download menu
- (G) Tap Save to save the preset to your local preset list
- (H) Rename the preset before you save
- (I) Select which category you would like the preset to show up in
- (J) Tap on the Profile to explore the preset creator's profile
- (K) Tap on Follow to follow the creator, their presets will show up in the Following category in the ToneCloud

Share Your Own Presets to the ToneCloud

Share presets you've designed yourself for others in the Spark community to enjoy.



(A) Tap on the  on the top right of the Tone page

(B) Tap Share to ToneCloud

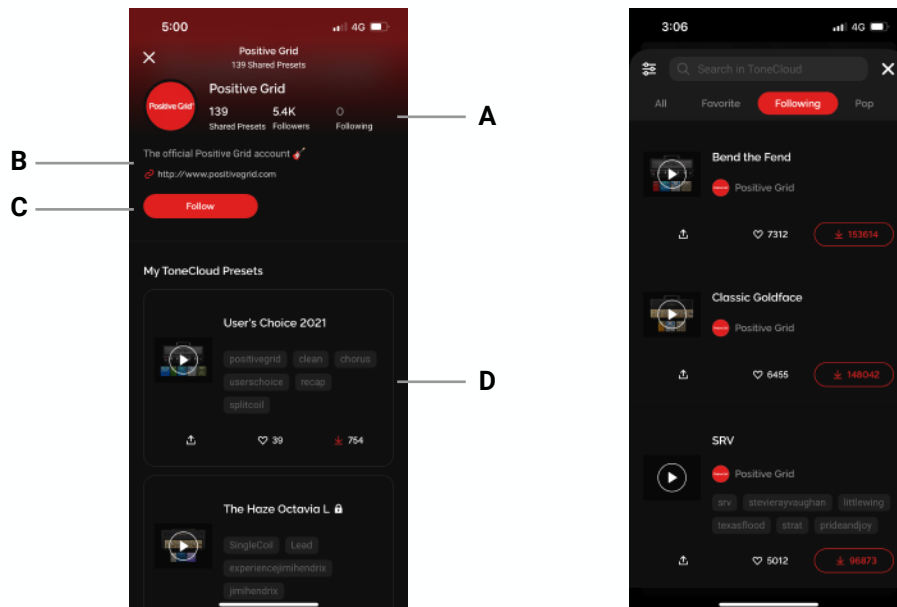
(C) Rename the Preset and select a genre

(D) Add up to 6 tags to make it easier for others to search for your preset; some suggested tags would be pickups used (single coil, humbucker, etc), which pickup position was used, characteristic of the tone (ambient, crunchy, higan, etc) and its usage (lead, rhythm, solo, etc), artist or song, etc.

(E) Tap Share to share it to the ToneCloud

Explore Other's Profiles

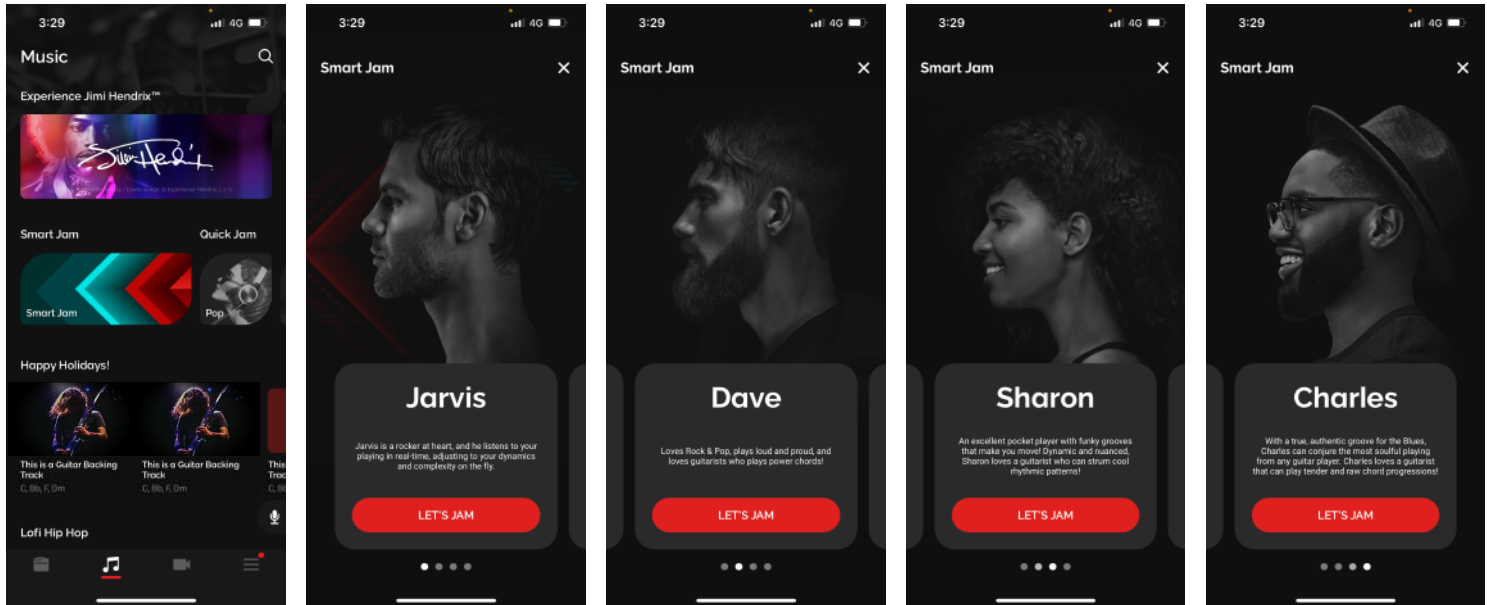
Get to know other musicians in the Spark community by exploring and following their profile.



- (A) Tap on Followers or Following to see who the profile owner is following or being followed by.
- (B) Read the profile's Bio or tap on their link to learn more about them.
- (C) Tap on Follow to add them to your follow list; their presets will show up in the Following category of the ToneCloud.
- (D) Explore presets that have been shared to the ToneCloud by the profile owner.

Using Smart Jam

Spark Amp and app work together as one unit to learn your style and feel, then generates authentic drums and bass tracks to accompany you.



Make sure you are connected to your Spark device's Bluetooth Audio, then tap on the Music page and tap on the Smart Jam banner. Select 1 of the 4 drummers available by swiping left or right to begin.

- Jarvis

Jarvis is a rock-style drummer who will listen to your dynamics and feel while you're playing, and provide you with real-time feedback with louder or softer hits, and more simple or complex grooves. [More on that later.](#)

- Dave

Dave is a Rock style drummer who hits hard and hits loud! Dave will listen to your chords and create a backing track that follows a song structure, with a Verse, followed by a Chorus, then a Bridge, and another Chorus, according to what you played.

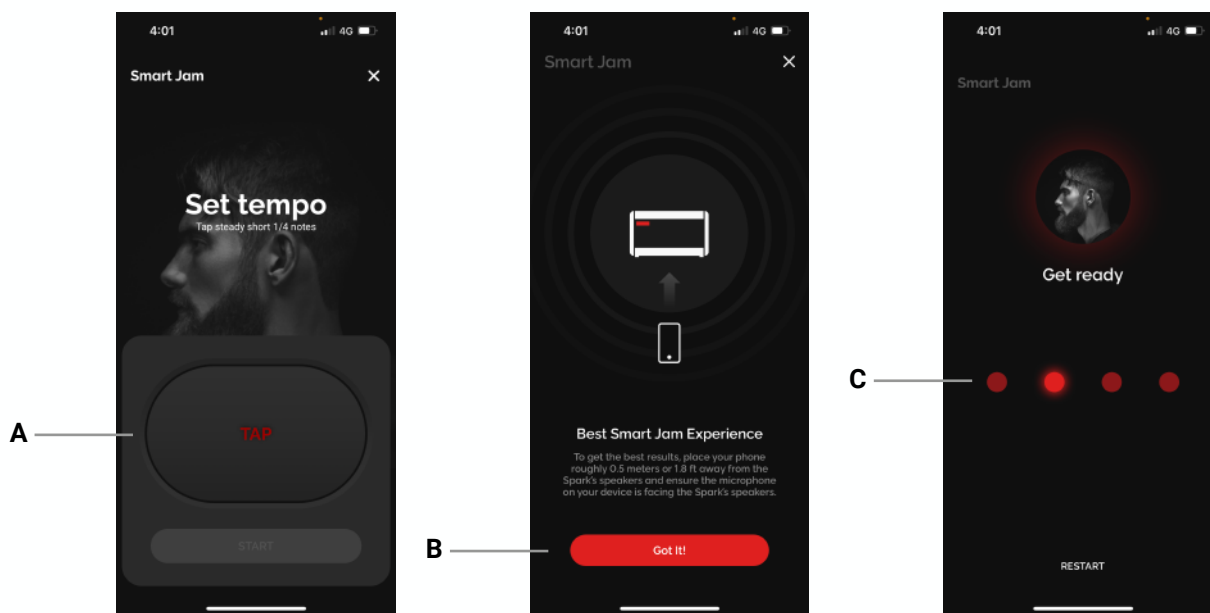
- Sharon

Sharon is a Funk style drummer with grooves that make you move! Sharon will also listen to your chords and create a backing track that will follow a song structure according to your initial chord progression and strumming pattern.

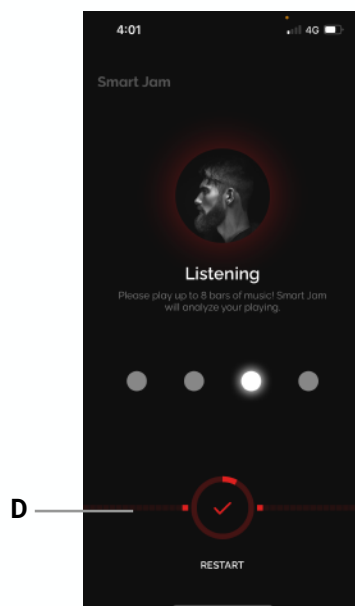
- Charles

Charles is a Blues style drummer who plays to help you bring out your most soulful playing. With Charles, you can choose between a straight and shuffle feel, and between an 8-bar or 12-bar blues progression. Once you've selected the feel and BPM, start playing your desired chord progression and let the blues take over!

Playing With Dave/Sharon/Charles

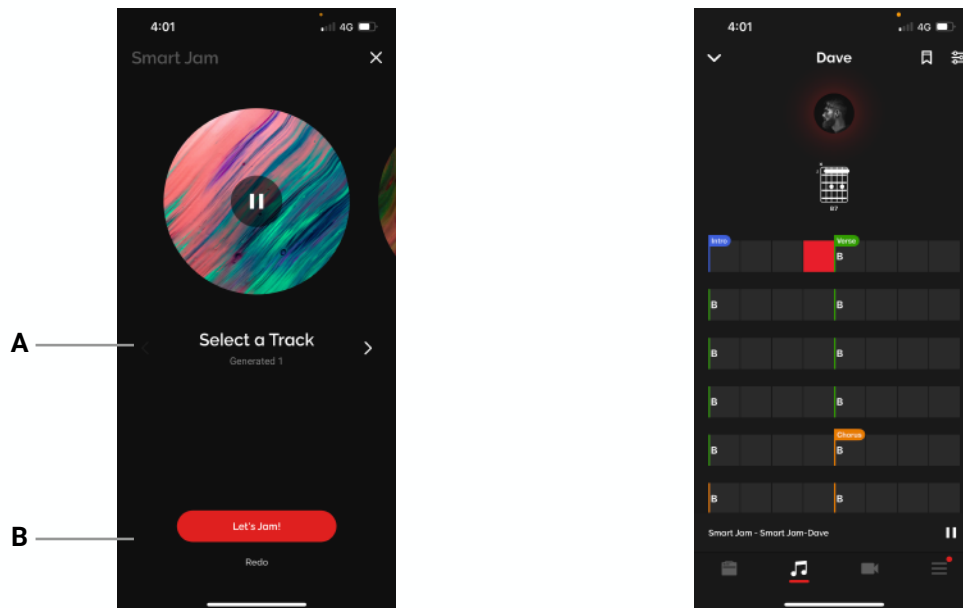


- Set a tempo by tapping the TAP button to tap a tempo. You may adjust in increments of 1 with the +/- sign once an initial tempo has been set, and increments of 10 by tapping and holding the buttons, then tap Start.
- For first time Smart Jam users, you will be reminded to place your device roughly 0.5 meters or 1.8 feet away from your Spark's speakers, with the microphone facing the Spark amp's speakers for the best results.
- You will be given 4 beats to count you in. If you do not hear the clicks, please ensure that your device is connected to Spark's Bluetooth audio and that your device and Spark's music volume is turned up.

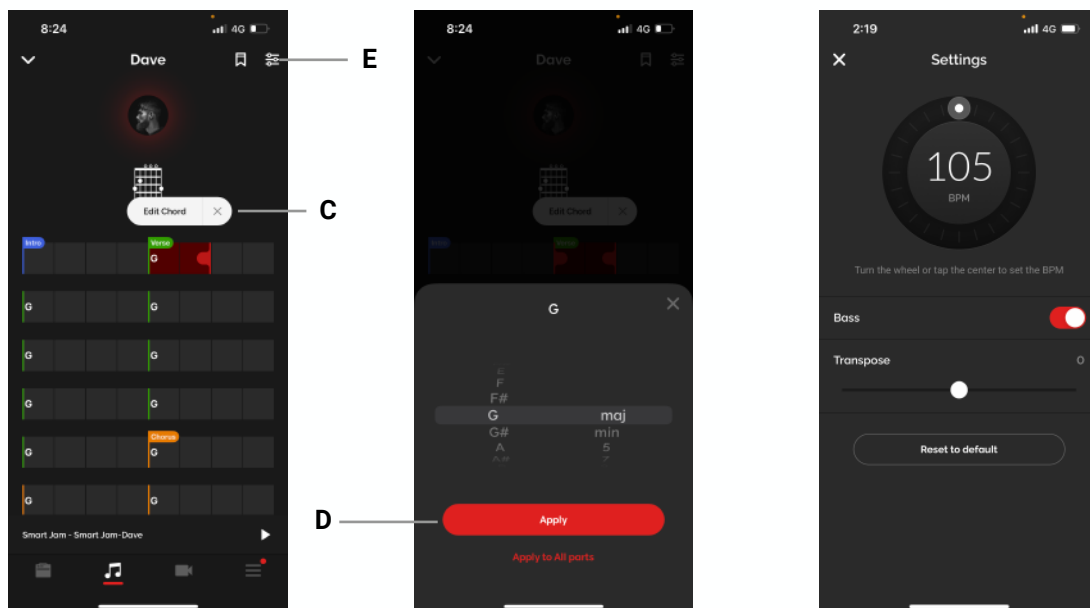


- The drummer will listen to your playing after the 4 initial beats. All the Smart Jam drummers currently support 1 chord every 2 beats. Make sure to observe the red bar at the bottom of the screen; when the red line goes across the entire screen, it means you have clipped the microphone on your device, and the results may not be accurate.
 - You may play up to 8 bars, but if your chord progression is only 4 bars, you may tap the checkmark button when it's highlighted on the screen to skip the last 4 bars.
 - Once the analysis is complete, select from the 6 tracks that have been created by the drummer that you like best. Swipe left or right to scroll between each option and preview the tracks.

Playing With Dave/Sharon/Charles



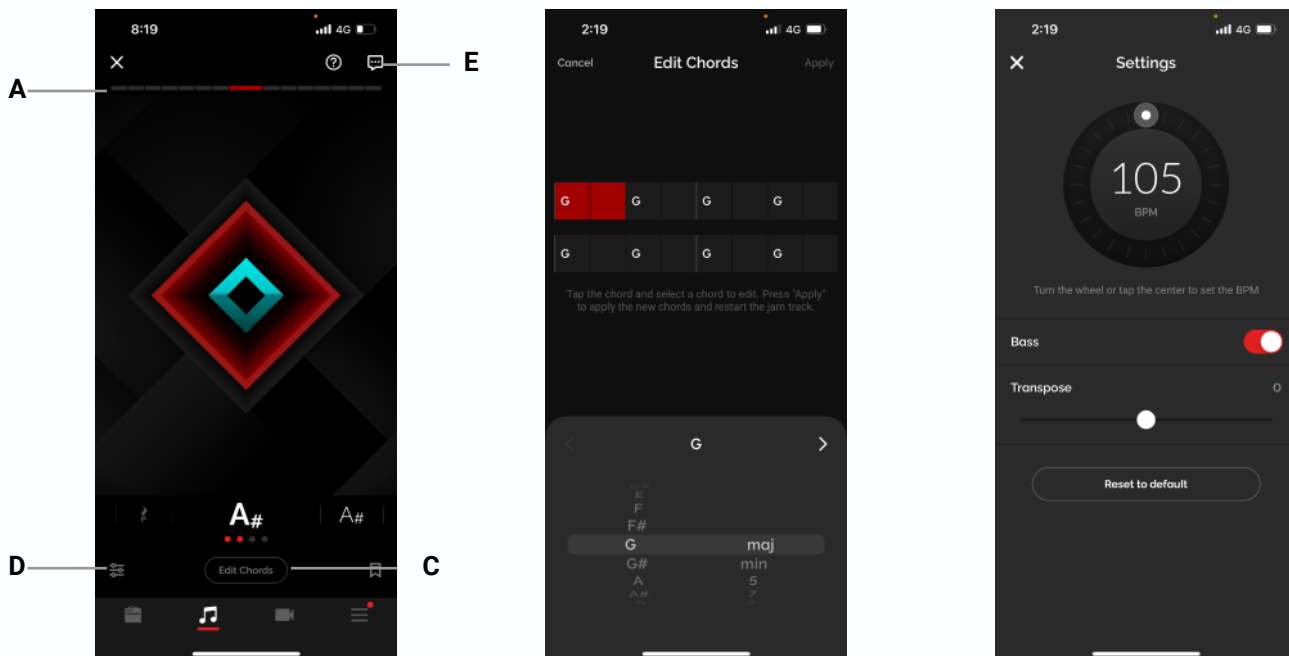
- A. Once the analysis is complete, select from the 6 tracks that have been created by the drummer that you like best. Swipe left or right or tap the arrow icon to scroll between each option and preview the tracks.
- B. After selecting a track, you will be taken to the Smart Jam detail page where you can start jamming! Tap redo if you'd like to record another chord progression.



- C. You may edit the chords by pausing the track, then long pressing any of the chords then tapping Edit Chord. Select more than one bar by dragging the red indicator to the right of the selected area.
- D. After changing the chord to your desired chord, tap apply to apply the chord change just to the selected range, or tap Apply to All Parts to apply the chord change to all sections of the Smart Jam track.
- E. Tap on the Settings icon on the top right to go to the Smart Jam settings menu, where you can adjust BPM, turn off the Bass track, and transpose the track by increments of half steps to a maximum of an octave up or down. Tap Reset to default to reset to the initial analyzed or saved settings.

Playing With Jarvis

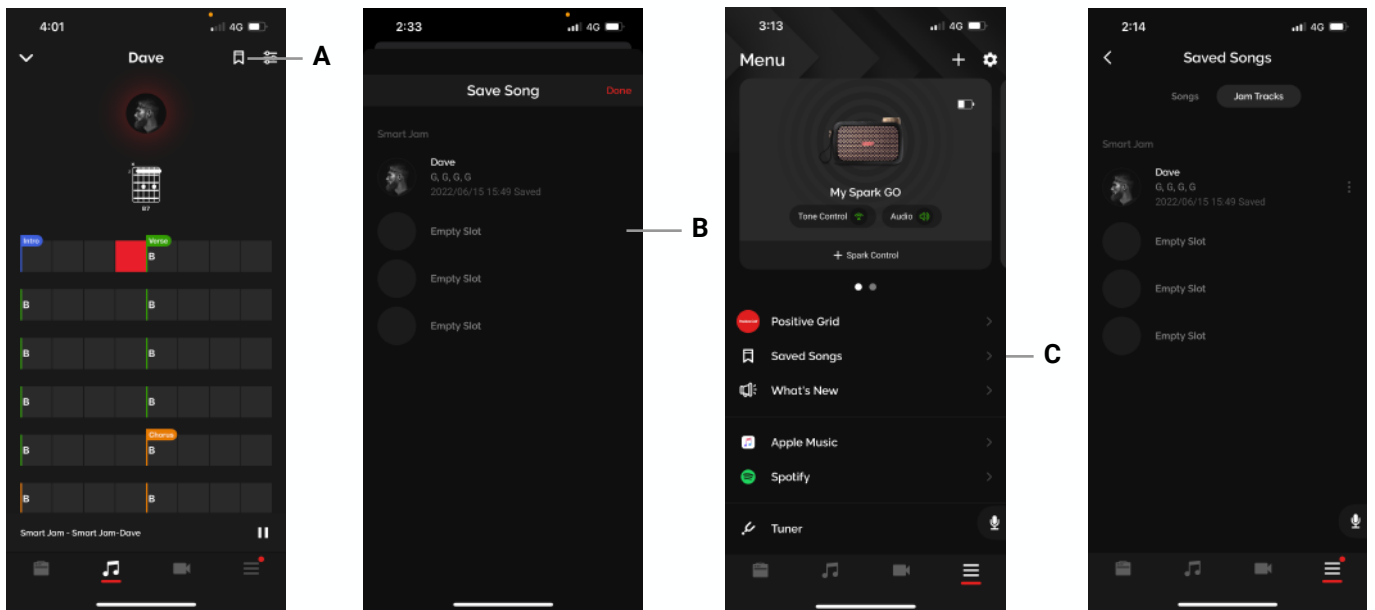
Jarvis is unique in that they will listen to your playing in real time and change along with your dynamics and complexity of your playing while you play.




Follow the steps for playing with Dave/Sharon/Charles:

- A. For the best real time jamming experience, observe the top red bar and do the following calibration during your first playthrough with Jarvis:
 1. At your loudest playing level, ensure that the top red bar is almost at maximum. If it's at maximum, it indicates that your device's microphone is clipping; turn the volume of your instrument and music accordingly to ensure it's not clipping.
 2. At your quietest playing level, ensure that the top red bar is at roughly 3 red blocks. This minimum and maximum range will have better dynamic detection.
 3. Make sure your guitar is louder than the backing track. Try to aim for a volume balance with your guitar and backing track at roughly 2:1 or 2:1.5. This will make it easier for Jarvis to detect your guitar playing.
- B. To edit chords, tap the Edit Chords button, then select the chord you'd like to edit. Once you've changed your desired chords, tap Apply to apply the changes to the track.
- C. Tap the Settings icon on the bottom left to change the jam track's settings; you may adjust the tempo, turn off the bass, and transpose the track by increments of half steps and up to a whole octave up or down. Tap Reset to default to reset the track to the analyzed or saved version of the track.
- D. Leave feedback by tapping on the Feedback icon on the top right of the page, and to review instructions for using Jarvis, tap the Help icon next to it.

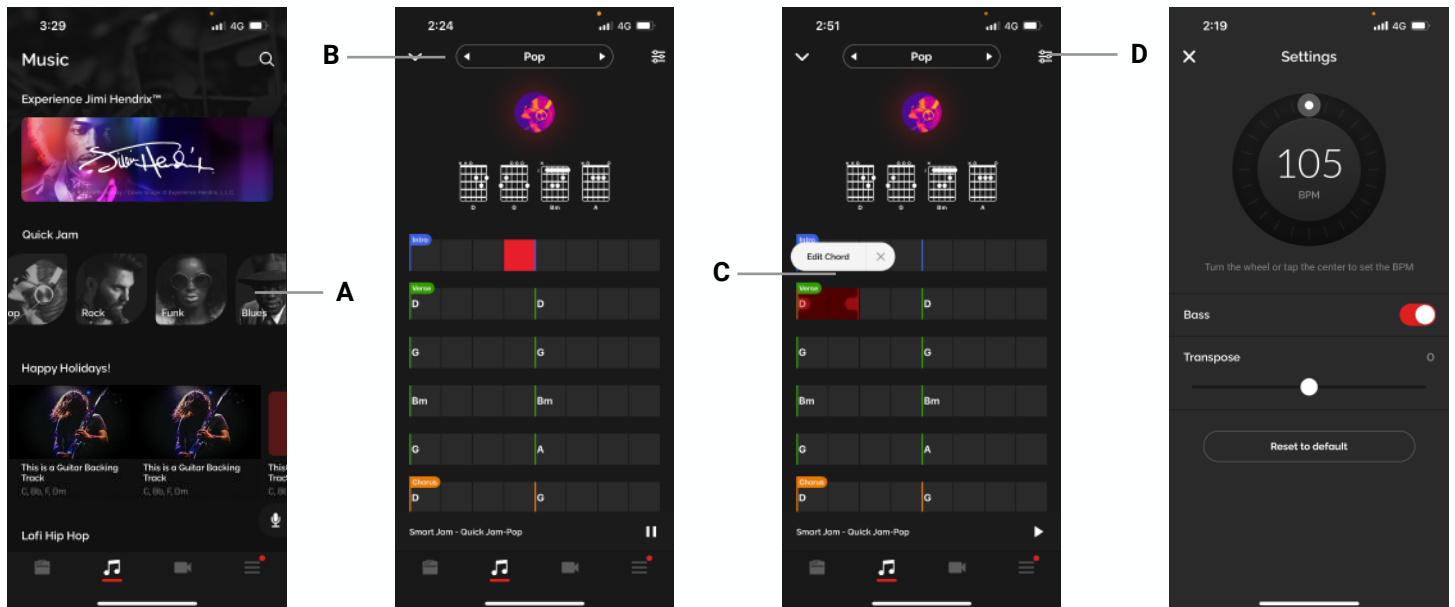
Saving a Backing Track



- A. You may save a backing track by tapping on the bookmark icon available in the Smart Jam detail page for all drummers.
- B. Select a save slot to save your backing track.
- C. Access your saved Smart Jam tracks from the Saved Songs page in the Menu, then select the Smart Jam tab. Tap on your desired jam track to load a previously saved Smart Jam track. You may also rename or clear the track from the slot by tapping on the  icon.

Starting a Quick Jam

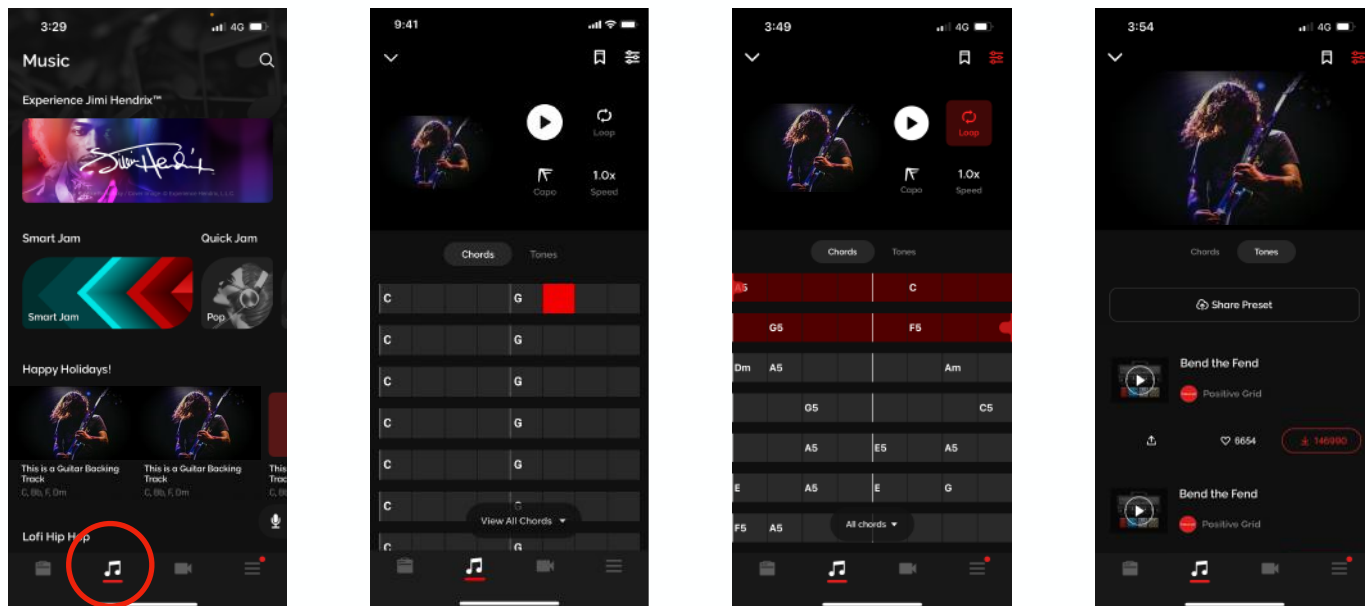
Quick Jam are backing tracks that use the same audio engine as Smart Jam with preset chord progressions and grooves.



- A. Access Quick Jam by going to the Music page, then scroll the Smart Jam/Quick Jam banner horizontally to see the available genres; Pop, Rock, Funk and Blues. Tap into the genres to start the backing track.
- B. Tap on the left and right arrows next to the genre at the top of the page to switch between the designed tracks for each genre.
- C. Pause the track, then long press a chord to edit the chord, following the same steps as Smart Jam.
- D. Tap on the Settings icon on the top right to adjust settings. The same adjustments in Smart Jam are available here; you may adjust the tempo, turn off the bass, or transpose the track by increments of half steps up to an octave up or down. Tap Reset to default to reset the track to its initial default state.
- E. Any changes made will be automatically saved, and automatically loaded when you load up Quick Jam.

Using Auto Chords and Tones

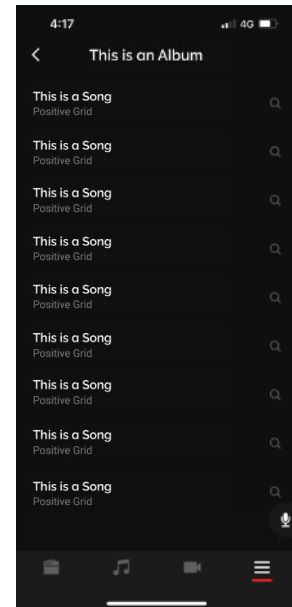
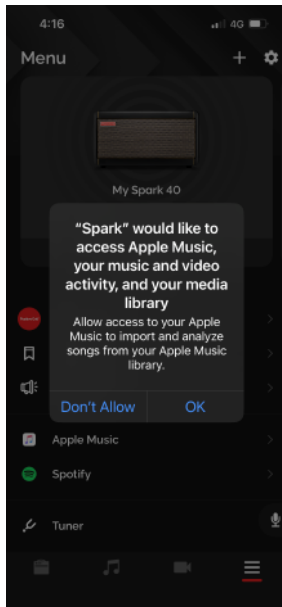
Choose any song, and Spark will automatically display its chords in real time as you play. Intuitive controls easily let you slow down the song's tempo or loop a difficult section.



- (A) Go to the Music page and tap on our curated playlists to learn songs from those playlists.
- (B) Search for any song with the search bar at the top of the Music page to learn a song of your choice.
- (C) Tap on the Settings icon on the top right to access Music tools
 1. Tap on Loop and drag the handles to loop the selected section.
 2. Tap on Capo to change the chords to a capo'd version, allowing you to play with standard open chords.
 3. Tap on the Speed button to change the speed of the track to 0.5/0.8/1.0x speed to practice at a slower tempo.
- (D) Tap on Tones to bring up tones that are recommended for the song according to other users. Upload your own ToneCloud presets to contribute to this growing pool of tones!

Connecting Spotify and Apple Music

Connect your Spotify and Apple Music accounts to import your saved albums to the Spark app.



(A) Go to the Menu page and tap on Spotify or Apple Music.

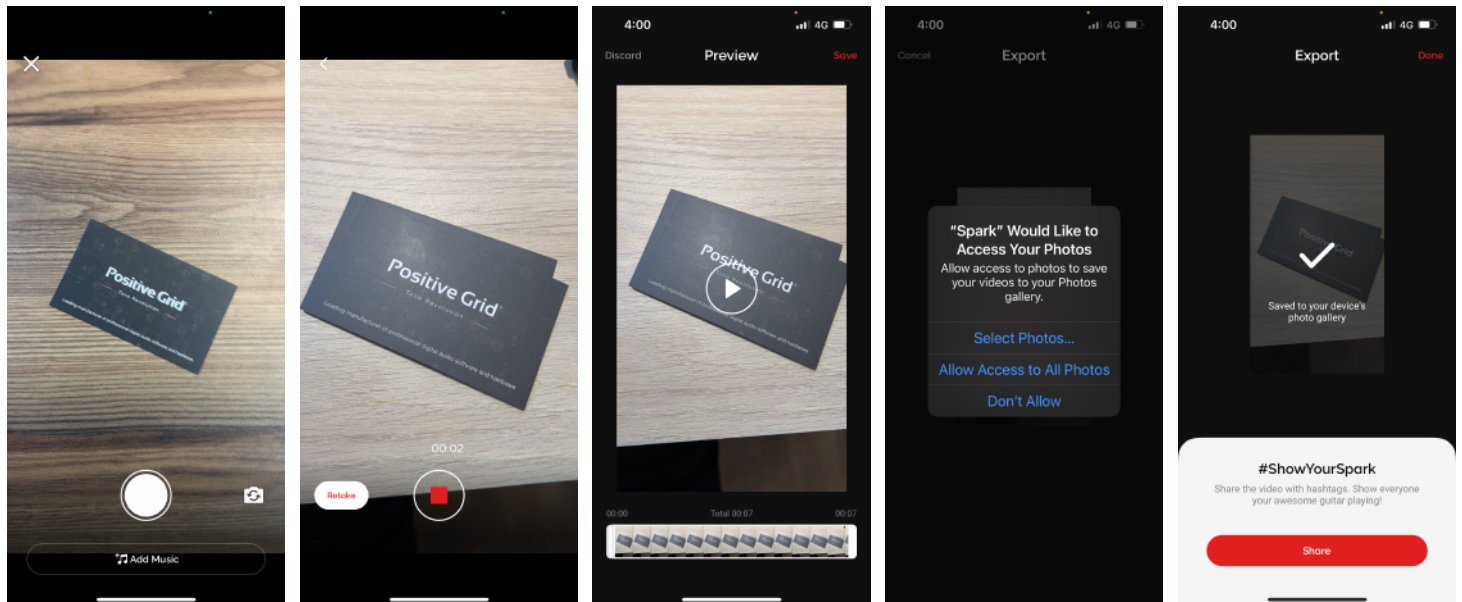
(B) Log in to your Spotify or Apple Music accounts.

(C) Choose the desired album from your Apple Music or Spotify list to import your albums into Saved Songs in the Menu page.

Tip: Make sure that Spark has access to your Spotify or Apple Music account.

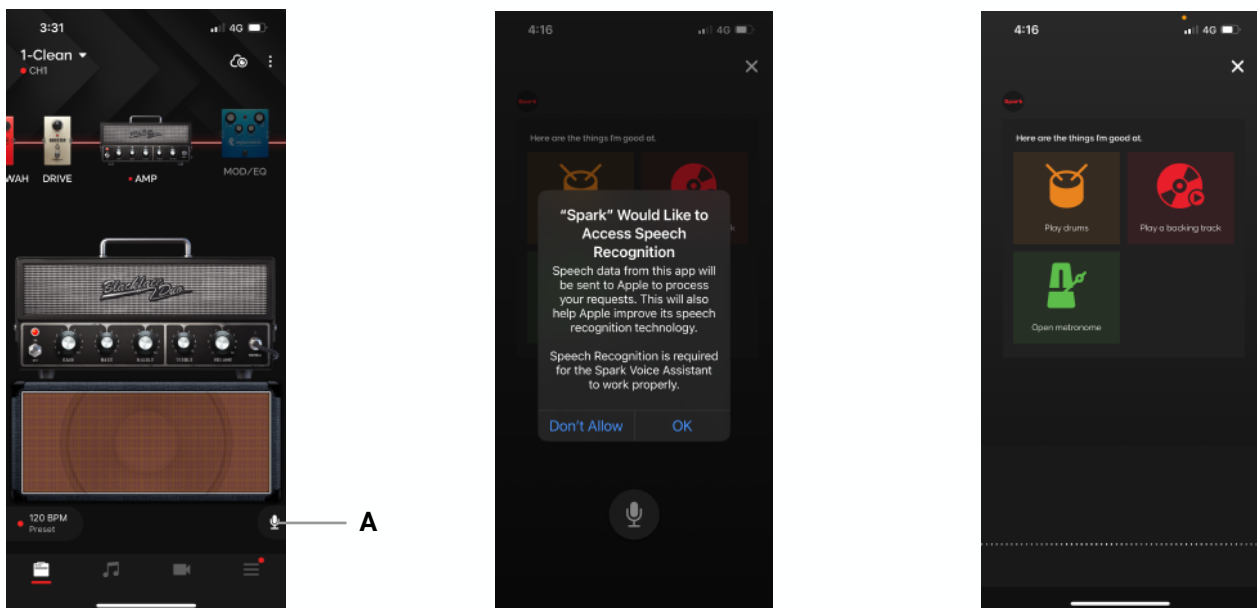
Using Video Recording

Record a video of your guitar playing from within your Spark app to record ideas or covers to share to social media.



- (A) Tap the Video icon to open the Video Recording function.
- (B) Tap Add music to add a Smart Jam backing track or a locally saved music file to play along to while you record.
- (C) Tap the camera flip icon to switch between the front and back cameras of your device.
- (D) Tap the Record button to start recording, tap again to stop recording.
- (E) Tap Retake to begin another take without stopping your initial video.
- (F) Once you've finished recording your video, you may trim the beginning and end of the video to your desired length in the Preview Screen.
- (G) Tap Save to export the video to your camera roll. Make sure the app has access to your Photo library to save the video.
- (H) Tap share to share to social media or messaging platforms, or Done to continue.

Using Voice Command



(A) Music Assistant

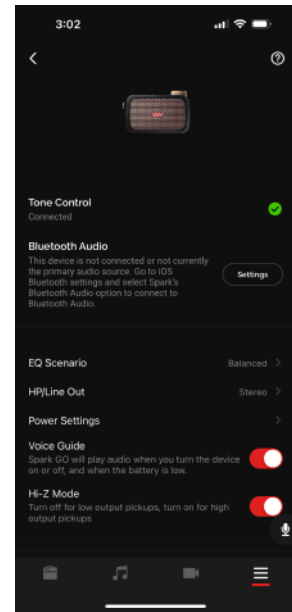
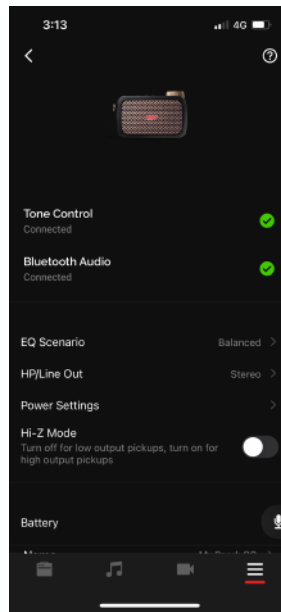
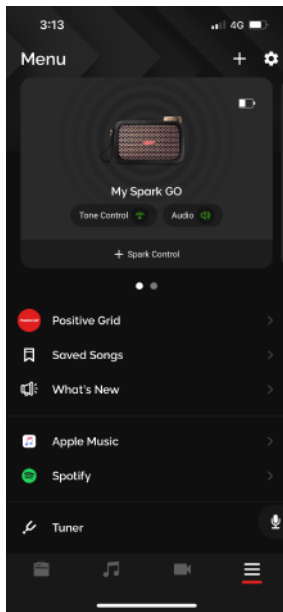
1. Tap the microphone icon. It is available in most pages.
2. Make sure to allow permissions for Speech Recognition and your devices Microphone to ensure the feature works properly.
3. Speak into your smartphone with the following voice commands. Alternatively, you can tap the on-screen quick commands.
 1. Play drums - Same as Smart Jam
 2. Play a backing track - Play a custom backing track.
 3. Metronome - Open Spark's built-in metronome

(B) Voice Command Language Support

1. English
2. Japanese

Tip: The Voice Command feature has three quick commands. Try them!

Device Card and Adjustments



The Device Card can be accessed in the Menu page once you've connected your Spark Amp. Once it's connected, several settings can be adjusted and statuses can be observed.

1. **Tone Control and Bluetooth Audio** - Shows the status of your Bluetooth connections between your device to the Spark Amp
2. **EQ Scenario** - Change the EQ of your amp's output between Balanced, Rock, Acoustic, Bass to optimize both music playback and instrument output to your desired mode.
3. **HP/Line Out** - Adjust this to change the behavior of the Headphone out port. You may select between the following options:

Stereo

This is the default option. This allows you to connect stereo output sources such as headphones and studio monitors.

Mono

This option allows you to connect to mono output sources such as guitar amps, powered cabinets, audio interfaces and other devices with mono inputs.

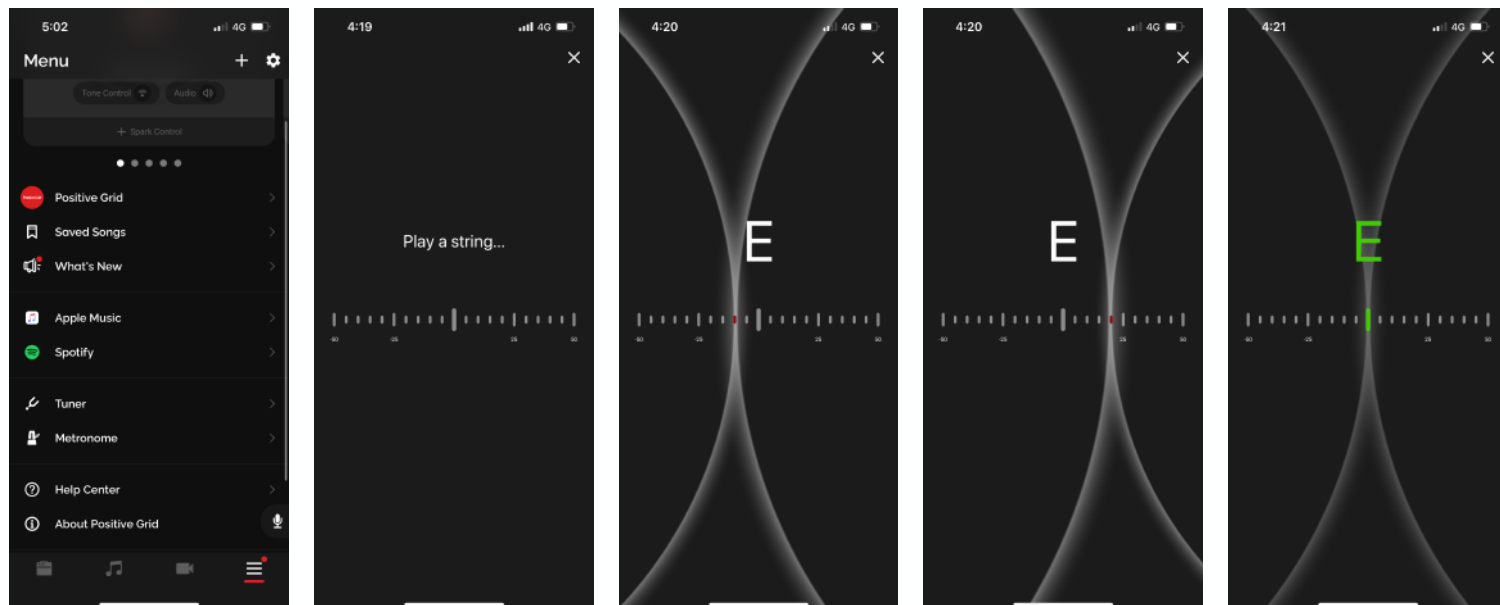
4. **Power Settings** - Power Settings will allow you to adjust Spark GO's Auto Standby and Auto Shutdown features to save battery life.

Spark GO will automatically enter a low power state after a set amount of time has passed where no audio is detected to preserve battery life. The time it takes to enter standby mode can be adjusted in this menu. While the Spark GO is in this state, instrument output and music playback will be temporarily disabled. To enable audio output again, play your plugged in instrument or start audio playback to reactivate it.

5. **Voice Guide** - Switch the voice guide on/off.
6. **Hi-Z Mode** - Turn on or off to compensate for different pickup outputs, turn on for high output pickups, off for low output pickups.
8. **Battery** - Displays the battery status of your device.
9. **Name** - Change the display name of your Spark amp when connecting to your Spark.
10. **Model** - Displays the model of your Spark amp.
11. **Firmware** - Displays the firmware version installed on your Spark amp.
12. **Serial Number** - Displays the Serial Number of your Spark amp.
13. **Restore to Factory Settings** - Restores all settings to the factory defaults.
14. **Forget This Device** - Remove this device from your list of connected devices.

Other Available Functions

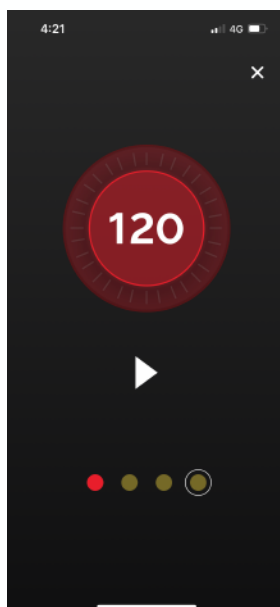
Tuner and Metronome



(A) Access the Tuner and Metronome by going to the Menu page and scrolling down, tapping on the desired tool.

(B) Once in the Tuner page, play your instrument to start tuning

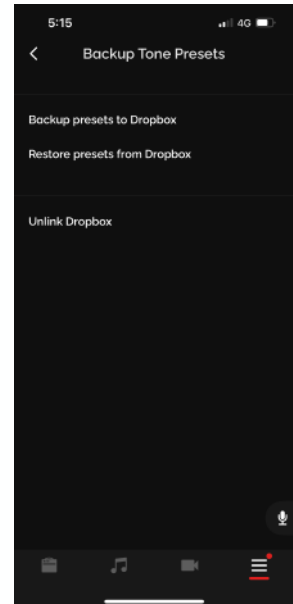
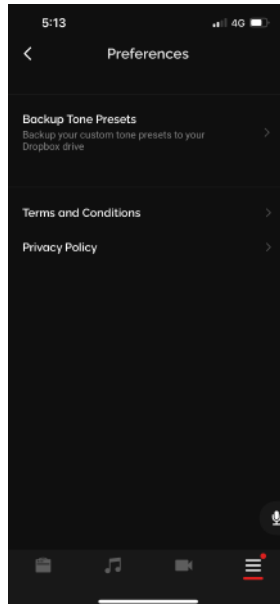
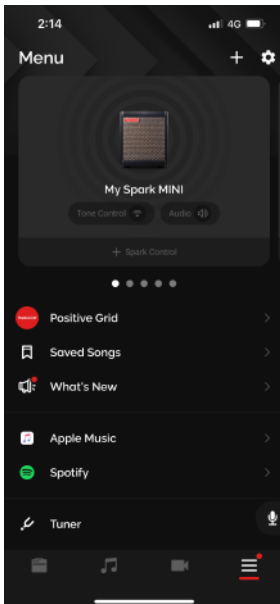
1. If the line is to the left of the middle point, your instrument is below the target pitch
2. If the line is to the right of the middle point, your instrument is above the target pitch
3. Once the line is in the middle and the note turns green, the string is in tune and you may move on to tune the other strings to your instrument




(C) In the Metronome page, tap on the number at your desired tempo to set the tempo. You may also press and turn the outer ring to adjust the tempo. Tap on the play button to start the metronome.

Other Available Functions

Back Up Presets to Drop Box



- (A) To Back Up your presets to Drop Box, tap on the  icon at the top right of the Menu page.
- (B) Tap on Backup Tone Presets and link your Drop Box account to the Spark app.
- (C) Once linked, tap on Backup presets to Dropbox to backup your local presets, and tap on Restore presets from Dropbox to restore those presets.

Online Support

Visit our online Help Center for user manuals, FAQs, or to contact our support team.
Help Center: <https://help.positivegrid.com/>